

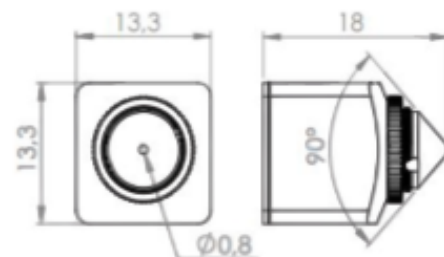


Model	SIT-CAM-MC 505 FDC	SIT-CAM-MC 505 FDB
Video format	PAL (0.001 Lux)	PAL (0.001Lux)
Number of pixels	1920x1080 AHD 2.0	1920x1080 AHD 2.0
Matrix	1/2.9" COLOR COMOS	1/2.9" COLOR COMOS
Lens	Pinhole M8	Pinhole M8
Cable length	0.8 m (black, white, gray)	
Operating temperature	-10 to 60 Degree C	
Feeding	Camera input: DC 3.3V (0.64W) DC-DC converter 12V (0.59W)	Camera input: DC 3.3V (0.92W) DC-DC converter 12V (0.92W)

SIT-CAM-MC 505 FDC



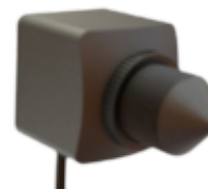
PARAMETERS:
Lens cone - f4.0
Viewing angle 65°



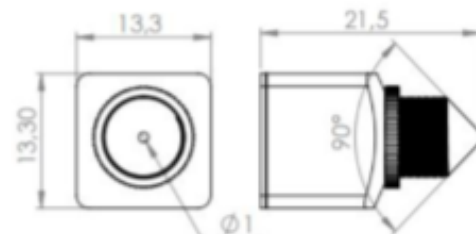
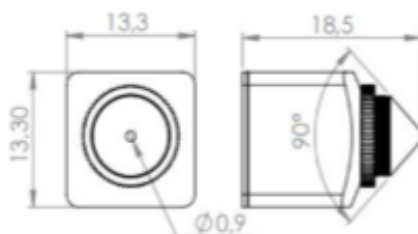
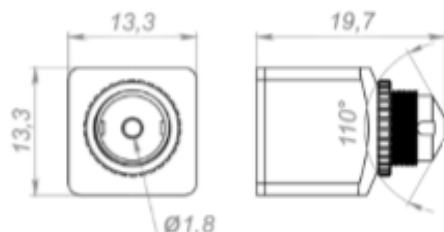
PARAMETERS:
Lens cone - f2.8
Viewing angle 90°



PARAMETERS:
Lens cone - f3.7
Viewing angle 75°



PARAMETERS:
Lens cone - f6.0
Viewing angle 50°



SIT-CAM-MC 505 FDB



PARAMETERS:
Lens cone - f3.7
Viewing angle 75°



PARAMETERS:
Lens cone - f2.8
Viewing angle 90°



PARAMETERS:
Lens cone - f4.0
Viewing angle 65°



PARAMETERS:
Lens cone - f6.0
Viewing angle 50°

